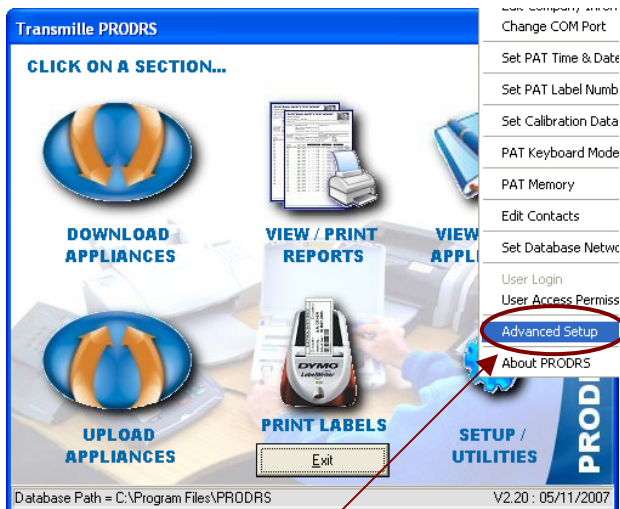


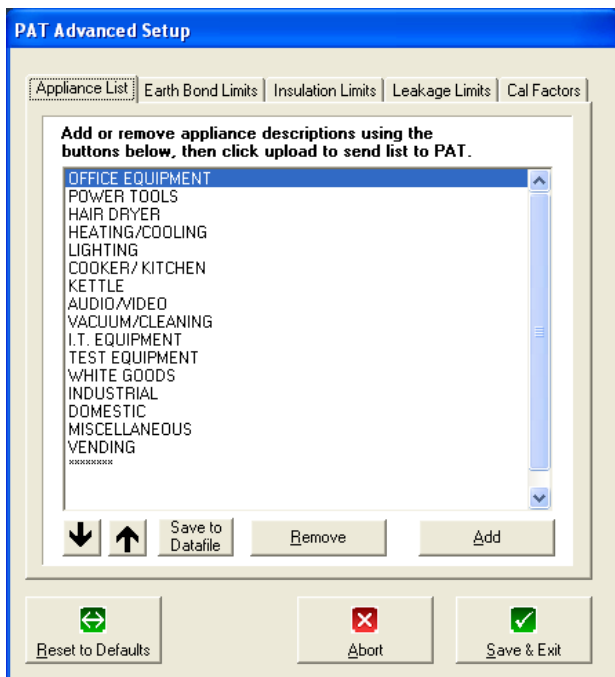
### Advanced Setup Function



Select the **Advanced Setup** menu from the Setup / Utilities icon.

### Appliance List

This tab allows the built in appliance list to be edited to add, remove or change the order of the appliance descriptions. Restore to the default descriptions is also available.



Move the selected description down within the list.

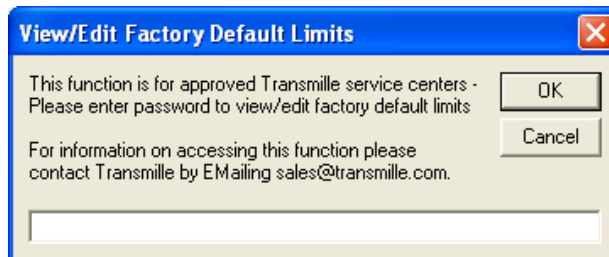
Move the selected description up within the list.

Save appliance list to datafile for restore at a later time.

Remove appliance description from the list.

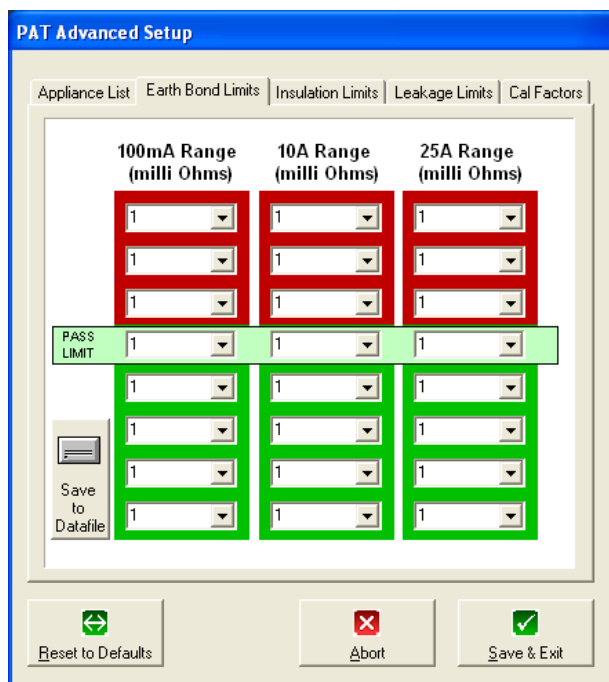
Add an appliance description from the list.

### Editing The Limit / Cal Factor Data



When a limit / cal factor tab is selected for the first time, a password will be requested. Enter the password and access will be allowed to all the remaining tabs on the advanced edit screen.

### Editing The Earth Bond Limits Data



Enter the earth bond limits in mOhms. Each location indicates the limit for the specific LED scale point.

Save the earth bond limits for restore at a later time.

### Editing The Insulation Limits Data

PAT Advanced Setup

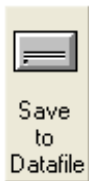
Appliance List | Earth Bond Limits | Insulation Limits | Leakage Limits | Cal Factors

CLASS 1 (milli Ohms)	CLASS 2 (milli Ohms)
2	2
2	2
2	2
PASS LIMIT 2	PASS LIMIT 2
2	2
2	2
2	2000
2	5000

Save to Datafile

Reset to Defaults | Abort | Save & Exit

Enter the insulation resistance limits in mOhms. Each location indicates the limit for the specific LED scale point.



Save the insulation resistance limits for restore at a later time.

### Editing The Leakage Current Limits Data

PAT Advanced Setup

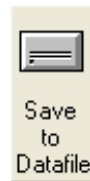
Appliance List | Earth Bond Limits | Insulation Limits | Leakage Limits | Cal Factors

CLASS 1 (mAmps)	CLASS 2 (mAmps)
3	3
3	3
3	3
PASS LIMIT 3	PASS LIMIT 3
3	3
3	3
3	20
3	10

Save to Datafile

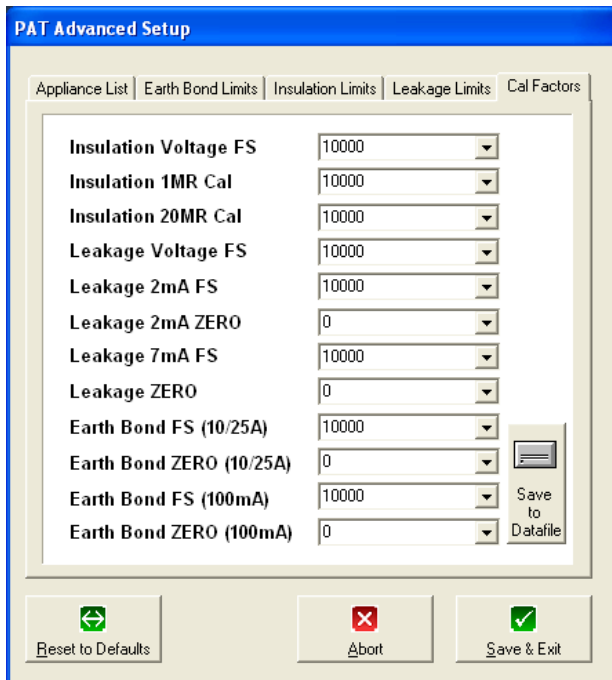
Reset to Defaults | Abort | Save & Exit

Enter the leakage current limits in mA. Each location indicates the limit for the specific LED scale point.

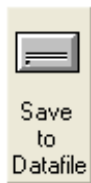


Save the leakage current limits for restore at a later time.

### Editing The Cal FactorData



Enter the calibration factors for all the calibrations points – zero cal factors default setting is **0 (zero)**, full scale cal factors default setting is **10000**.



Save the cal factors for restore at a later time.

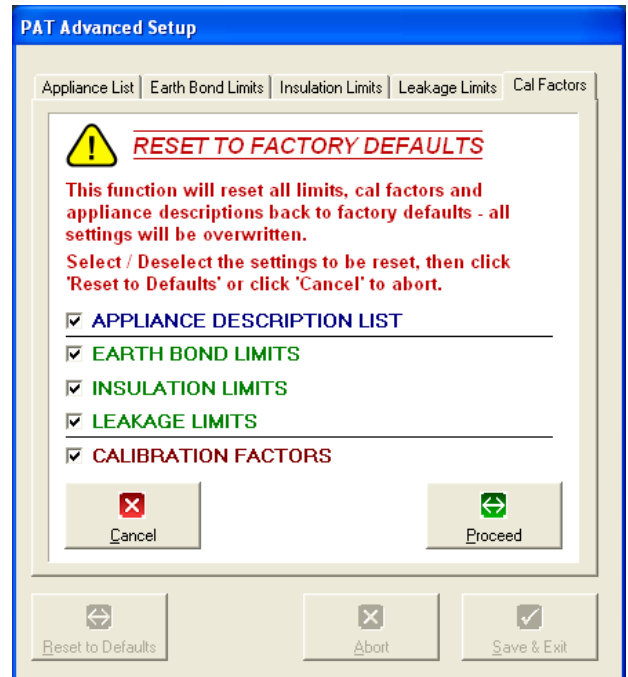
### Additional Functions :: Reset To Defaults



The reset to defaults function allows the settings to be restored to either :

- Factory Defaults
- Custom Defaults (if the 'Save to File' function for any section has been used)

One or more of the advanced setup functions can be restored using the restore configuration screen :



Simply check / uncheck any of the sections you want to restore, then click PROCEED or click CANCEL to abort the restore process.

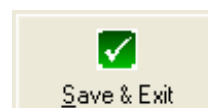
### Additional Functions :: Abort



Use the abort button to exit the advanced setup without writing any changes to the PAT (including restore to factory defaults).

**Note :** If the 'Save to File' button on any of the advanced setup screens has been pressed, these files will have already been changed to custom values – clicking abort will not 'undo' this, however these changes will not have been written to the PAT.

### Additional Functions :: Save & Exit



Click Save & Exit to write any changes to the PAT and close the advanced setup screen. Note the program will only upload functions which have been edited to the PAT.