

### Selecting a COM Port



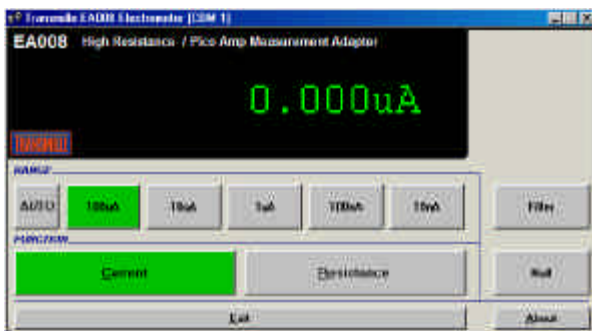
On starting the virtual front panel for the first time, a COM port selection screen will be displayed. Click on the COM port which is connected to your 2000 Series calibrator to continue.



If you are using a laptop to connect to the calibrator, the COM port will usually be COM 1. A desktop computer will usually be COM 2

### Operation of the Virtual Front Panel

Once the correct COM port is selected, the calibrator will be detected, and the main screen displayed :



The main screen comprises of a main reading display, range selection buttons and function selection buttons.

Sampling is indicated on the main display by **SMPL**

### Functions : Current Measurement



The current measurement function provides five ranges to measure current :

**100uA • 10uA • 1uA • 100nA • 10nA**

### Functions : Resistance Measurement



The resistance measurement function provides five ranges. On initial selection of resistance, the program will indicate a voltage should be set and the range buttons will display 'No Volts'.

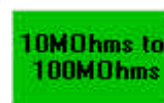
Selecting a test voltage using the voltage selection controls :



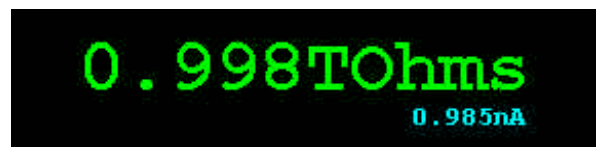
Select a voltage from the drop down list, or by entering a voltage using the keyboard.

Valid voltages are from 20V to 1000V.

Once a voltage is selected the range buttons will display the resistance ranges, for example :



The resistance display will show resistance in green, with a smaller display of current in blue



### Auto Range Function



Use the AUTO button to turn on the autoranging function. Click AUTO again or select a range button to turn off autoranging.

### Filter Function



Use the filter function to provide a 'walking window' type filtering on the readings (based on 3 samples)


When filter is on, the display will indicate **FILTER**

### Null Function (Current Measurement)



The null function allows each current range to be nulled independently.

To set the null, the terminals should be OPEN CIRCUIT.


If auto range  is selected, the virtual front panel will step through each range and perform a null.

### Set Infinity Function (Resistance Measurement)



The set infinity function allows The infinity point of each range to be set independently.

To set the infinity, the terminals should be OPEN CIRCUIT.

If auto range  is selected, the virtual front panel will step through each range and set infinity.



For information on other Transmille products



Click on to...  
[www.transmille.com](http://www.transmille.com)